

NFPA® RATINGS

Health: 0; Flammability: 1; Reactivity: 0

INGREDIENTS:

Water, Propylene Carbonate, Phenoxyethanol, Undeceth-5, Glycerin, Proprietary Fragrance Mixture, Laureth-7, PEG-15 Cocomonium Chloride, Lauramine Oxide, Iodopropynyl Butylcarbamate, .Beta.-Citronellol, (+/-)-, Cinnamic Alcohol, Coumarin, Eugenol, Cinnamal, Benzyl Benzoate, Isoeugenol, Citral, Hydroxyisohexyl 3-Cyclohexene Carboxaldehyde, Geraniol

TOTAL SOLUTIONS®

WET WIPES

CHERRY MULTI-PURPOSE HAND TOWEL

Industrial Degreaser

- INDUSTRIAL STRENGTH YET GENTLE TO SKIN
- WON'T SCRATCH SURFACES OR HANDS
- NO RINSING, NO RESIDUE
- CHERRY SCENT



Do Not Flush

See side panel for additional safety information

KEEP OUT OF REACH OF CHILDREN
AVOID CONTACT WITH EYES

NET CONTENTS: 70

9.5" x 12" (24.13 cm x 30.48 cm) Premoistened Wipes

Manufactured By: Total Solutions® • 1-800-743-6417
PO Box 240014 • Milwaukee, WI 53224 • athea.com

DESCRIPTION

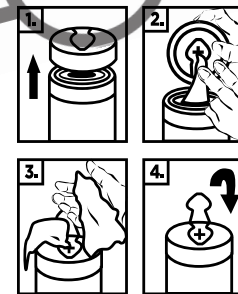
These waterless cleaners cut through the toughest tar, grease, wax, ink, paint, lubricants, and adhesive. They are extremely versatile, and can be used for nearly any job, from cleaning tools, to wiping hands, to cleaning machinery and other surfaces.

These wipes are industrial strength, yet gentle on skin – fortified with an emollient, they won't crack or dry hands. The textured side of the fabric won't scratch surfaces and is ideal for scrubbing tough soils, while the smooth side wipes surfaces clean. The formula won't leave behind a residue, dries on its own, and leaves a pleasant cherry scent.

DESCRIPTION

Unfold towel and use rough side to scrub hands and surfaces. No need to rinse or dry hands. Discard after use.

DIRECTIONS FOR DISPENSING



1. Remove lid by lifting upward. Remove foil seal.
2. Pull towel from center of the roll and thread through "X" on the underside of the lid.
3. Close lid. Pull towel at 90° angle.
4. Snap hinged cap back into place to ensure towels stay moist.

DISPOSAL

Offer empty container for recycling. If recycling is not available, discard container in trash. Do not flush wipes.

For industrial and commercial use only.

For additional information, see Safety Data Sheet.

Canister made from 25% post-consumer recycled plastic.



Please Recycle.

1685.071724