

NFPA® RATINGS
Health: 0; Flammability: 1; Reactivity: 0

CONTAINS/CAS NUMBER:
Water/7732-18-5; Mineral Oil/8042-47-5; Dimethicone/63148-62-9;
C12-15 Alcohols Ethoxylated/68131-39-5; Hydrotreated Light
Alkanes/64742-47-8; Isopropanol/67-63-0;
d-Limonene/5989-27-5; Hexyl Cinnamal/101-86-0;
Citral/5392-40-5; Sodium Hydroxide/1310-73-2

TOTAL SOLUTIONS®

WET WIPES

WB STAINLESS STEEL POLISHING WIPES

Cleans and Polishes in One Convenient Step

- NON-ABRASIVE TOWEL IS GREAT ON RANGE HOODS, SINKS, FAUCETS, AND GRILLS
- USE ON ALL PAINTED AND METAL SURFACES (BRASS, CHROME, SILVER & MORE)
- PERFECT FOR FOOD SERVICE APPLICATIONS



Do Not Flush

KEEP OUT OF REACH OF CHILDREN

NET CONTENTS: 70

7" x 8" (17.8 cm x 20.3 cm) Premoistened Wipes

Manufactured By: Total Solutions® • 1-800-743-6417
PO Box 240014 • Milwaukee, WI 53224 • athea.com

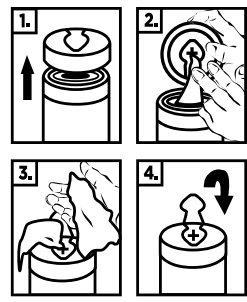
DESCRIPTION
WB Stainless Steel Polishing Wipes are pre-moistened with a water based, streak-free formula designed for the daily cleaning of appliances, stainless steel, and other metal surfaces.

These powerful Polishing Wipes are specially formulated to remove smudges, water stains, fingerprints, food spills, grease, and other residue while quickly drying to a streak free shine that lasts for days.

These wipes also work on other types of metals including brass, silver, chrome, and copper.

DIRECTIONS
Flip open lid, locate wipe at center of roll, pull out from center, and thread through guide. Close the lid to retain moisture. Wipe in the direction of the natural metal grain. Buff with a clean dry cloth or paper towel to achieve a brilliant shine. Wash hands after using. Avoid contact with plastic and glass.

- DIRECTIONS FOR DISPENSING**
1. Remove lid by lifting upward. Remove foil seal.
 2. Pull towel from center of the roll and thread through "X" on the underside of the lid.
 3. Close lid. Pull towel at 90° angle.
 4. Snap hinged cap back into place to ensure towels stay moist.



DISPOSAL
Offer empty container for recycling. If recycling is not available, discard container in trash. Do not flush wipes.

For industrial and commercial use only.
For additional information,
see Safety Data Sheet.
Canister made from 25% post-consumer recycled plastic.



Please Recycle.